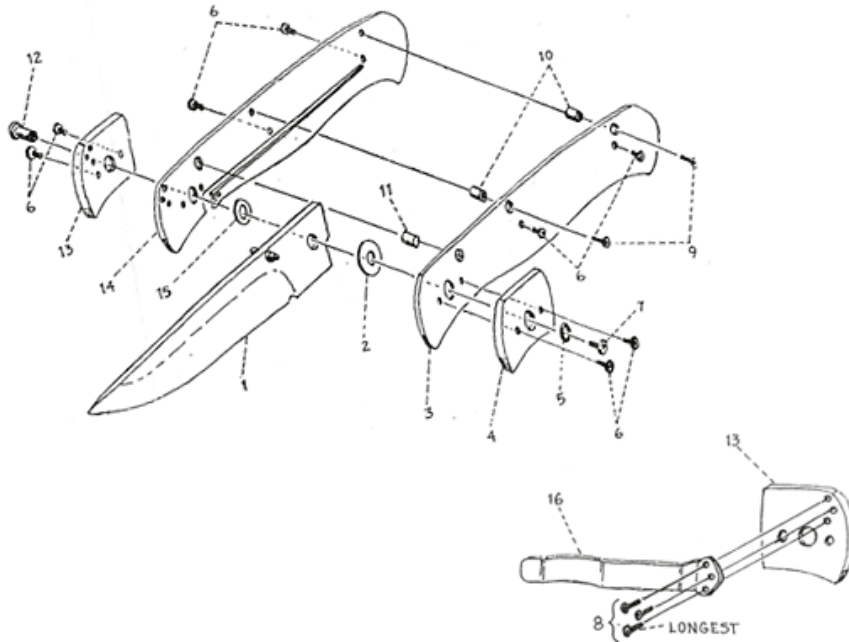


DDR-I (BL605) - Assembly Instructions



ASSEMBLY INSTRUCTIONS:

(Caution-Blade is Sharp)

PARTS LIST

- | | |
|--|-------------------------|
| 1. Blade | 9. (2) Flat Head Screws |
| 2. White Teflon Washer | 10. (2) Standoffs |
| 3. Left Liner | 11. Blade Stop Pin |
| 4. Left Bolster | 12. Pivot Pin |
| 5. Black Neoprene "O" Ring | 13. Right Bolster |
| 6. (8) Short Round Head Screws | 14. Right Liner |
| 7. Pivot Pin Screw (uses T9 TORX Driver) | 15. Gray Teflon Washer |
| 8. (3) Long Round Head Screws | 16. Pocket Clip |

Note: With Exception of the Pivot Pin Screw (7), All screws use a size T6 TORX Driver. Pivot Pin Screw uses size T9 Driver. Recommended Multi-Torx Tool

- Using two short head screws (6), attach L. Bolster (4) to L. Liner (13). Repeat procedure for R. Bolster (13) and R. Liner (14).
- Insert Blade Stop Pin (11) into hole in right Liner (14) as shown in diagram.
- Rotate Pivot Pin (12) 30 flat area aligns with flat spot in right Bolster/Liner hole and insert as shown.
- Place Gray Teflon Washer (15) over pin (12) on inside of r. Liner. Then fix blade (1) onto Pivot Pin in open position, back end of blade.
- Place White Teflon Washer (2) over end of pin (12)
- Align holes in L. Liner(s) over Pivot and Stop Pins (11,12) and press into place.
- Place Black Neoprene "O" Ring (5) into hole in L. Bolster use large screw (7) in Pivot Pin and tighten.
- Align Standoffs (10) over holes between liners. Insert flathead screws (9) and thread in lightly close blade and check alignment. Adjust by slightly flexing liners, if necessary tighten screws firmly.
- Attach Handle Scale of your choice or those provided in Upgrade Kit with remaining short screws. See detail for attaching pocket clip. Use the three long screws (B) to attach Clip (16) as shown. Longest screw goes in hole closest to center of Bolster.